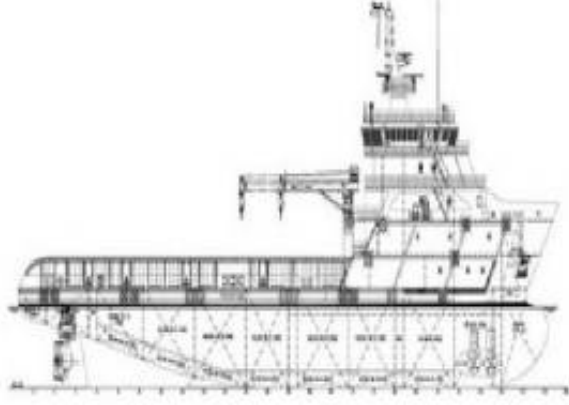


2 units of 75 m 6000HP FiFi 1 DP2 Platform Supply Vessels



Satıcı Firma Bilgisi

İsim: Benny Ling
İsim: Benny Ling
Web sitesi: <http://www.megalodonmarine.com>
Telefon: +60198248000
Adres: Sublot No 18,
Subdivision Lot 204,
Block 1 Seduan Land
District, Rantau
Panjang Shipbuilding
Industr

İlan Detayları

Reference Number: RF666477
Hakkında: 2 units of 75 m 6000HP FiFi 1 DP2 Platform
Supply Vessels
Fiyat: 1.00
Model: PS7501
Condition:
Country:

Ek Bilgiler

İlan Detayları:
SHIP PARTICULARS

Length Overall
75.00m

Length B.P
66.98m

Beam moulded
17.25m

Depth moulded
8.00m

Draft designed
6.50m

Deadweight:
3000 t (approx)

Class Notation:
ABS + A1 (E) Offshore Support, Fire Fighting Vessel Class-1 + AMS, ACCU + DPS-2, Unrestricted Services.

`condition`:
Complete on Oct'2011

Complete on Feb'2012

GRT/NRT:
2950 t / 885 t (approx)

Speed:
13.0 knots (ballast `condition`)

Endurance:
28 days (approx)

Accommodation

14 x 1-man cabin:
14 men

18 x 2-men cabin:
36 men

Total:
50 men

1 x hospital
1 man

Chiller:
28 days

Freezer:
28 days

Provision Store:
28 days

Dynamic Position System

Kongsberg dynamic position system per ABS DPS-2 requirement for safe and efficient vessel/offshore operation.

Discharge Rates

Fresh Water Cargo:
1 x 100m³/hr @ 80M head.

Fuel Oil Cargo:
2 x 150m³/hr @ 80M head.

Drill Water:
1 x 100m³/hr @ 80M head.

Ballast:
80m³/hr @ 70M head.

Bilge:
60m³/hr @ 50M head.

Liquid Mud:
2 x 75m³/hr @ 90M head.

GS / Fi-Fi:
1 x 80m³/hr @ 70M head.

Fuel Oil:
2 x 20m³/hr @ 20M head.

Cement Compressor:
2 x 20M³/min @ 80psi, air compressor.

Cargo Capacity

Clear Deck Area
700M²

Fuel Oil:
1000M³

Fresh Water:
500M³

Deck Cargo:
1200 t

Deck Loading:
5.5 t/M²

Drill Water:
1500M³

Bulk Cement:
226M³ (4 x 2000ft³)

Mud:
600M³

Bilge holding:
10M³

Dirty Oil:
10M³

Lub Oil:
10M³

Detergent:
14M³

Supply & Drainage Plant

Sewage Holding & Treatment System:
For 50 men

Oily Bilge Water Separator:
1 x 1.0M³/hr with oil content less than 15 ppm.

Freshwater Hydrophore Plant::
1 x 5M³/hr @ 35M head.

Seawater Hydrophore plant:
1 x 5M³/hr @ 35M head.

Freshwater Maker:

2 x reverse osmosis type of 10 t/day.

Hot Water Circulation Pump:

1 for 50 men

Engines

Main Engine:

2 x 3000BHP/750RPM, Niigata 8L28HX

Shaft Alternator:

2 x 1000kW.

Propeller:

Twin fixed pitch rudder propellers.

Bow Thruster:

2 x CPP type of 10 t thrust.

Main Generator:

3 x 450kW @ 1500rpm diesel driven, Caterpillar 415V/50Hz/3ph.

Emergency Generator:

1 x 80kW, diesel driven, Caterpillar.

Deck Equipment

Windlass:

1 x electro hydraulic type of 13 t @ 18M/min for 46mm dia. Chain with 2 warping heads.

Capstan:

2 x electro hydraulic type of 10 t.@ 25M/min.

Tugger winch:

2 x electro hydraulic type of 10 t.@ 24M/min.

Anchor:

2 x 1980kgs high holding anchors.

Lashing Lug:

20 x 10 t SWL.

Deck Crane:

1 x 3 t 10M max. outreach.

External Fire Fighting System

External FI-FI:

Class 1 c/w fixed water spray system.

Fire Monitor:

(Water/foam) 2 x 1200M³/hr @ 12 bar @ 120M throw length.

Fire Pimp:

2 x 1500M³/hr @ 14 bar @ 1800rpm.

Foam System:

20M³ c/w foam monitor.

Dispersant:

20M³ with 6M spray boom on each P&S side

Sea Chest:

2 x independent type.

Internal Fire Fighting System

Emergency Fire Pump:

1 x 35M³/hr @50M head (head (7 bar).

Full Flooding CO² System:

Provided in engine room with auto alarm.

Fire detection & alarm System:

Shipset

B.A. recharging Compressor:

1 x electric driven 200L/min @ 200 bar (meet FiFi-1 requirement)

Firemain:

1

Fire hydrants:

12

Fireman outfit:

4 complete sets.

Portable Fire Extinguishers:

Shipset.

Fire Blanket:

2

Fire Axe:

1

Paint Locker:

Shipset

Life Saving Equipment

6 x 25 men life rafts.

6 sets Work vest.

1 set Oxygen resuscitator.

1 x 25 men First aid kit.

1 x 6 men Life boat c/w davit (SOLAS diesel).

50 sets Immersion suits.

7 sets EEBD.

4 sets Air breathing apparatus.

Navigation Equipment

1 set Magnetic compass.

1 set Echo sounder.

1 set X-band Radar 96NM.

1 set S-band Radar 96NM.

1 set Inmarsat-C.

1 set Autopilot.

1 set GPS navigator.

1 set EPIRB.

1 set Navtex receiver(GMDSS).

3 sets Portable VHF (GMDSS).

2 sets SART(GMDSS).

3 sets Gyro compass.

1 set Weather facsimile receiver.

1 set AIS.

1 set Doppler speed log.

Yayınlandı:

15 yıl önce

