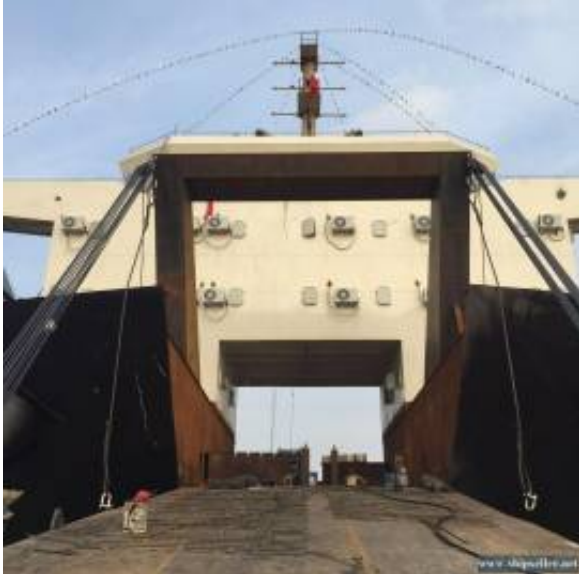


2 Units N/B, 13000DWT LCT Front Bridge Drive Self Propelled Deck Barge



Broker Info

Name: May Wang
First Name: May Wang
Website: <http://www.mimcoship.com>
Phone: +86-15900878727

Listing details

Title: 2 Units N/B, 13000DWT LCT Front Bridge Drive Self Propelled Deck Barge
Ref No: RF193677
Price: 1.00
Built: 2015
DWT: 13,000
Flag: CHINA
Model: SPB/LCT
Condition:

Additional information

Description:

Built at Nanjing, 2015, China

Class: ZC, A1-A2 Great Canal

LOA(LBP): 113.998.005.007.50m

Draft: 5.5m

DWT(GRT/NET): 13000/8752/8000

Loading Heavy Equipment/Scrub/Bulk Cargo

ME: 2 x Guangzhou D/E 6200D/G, 1470KW @ 325rpm

Generator 2 x COP/3200-RL 1200KW @ 1500rpm, 1 x 330KW @ 1500rpm

Shut Generator: 1 x 200KW

Ramp Size: 12m x 6m

Speed: 9Kts

Class: L27a

Inspection: China

Delivery: Dec.2015, China

(One unit will be ready for delivery in 30days, another will be ready within 2-3 months)

(The vessel has front bridge and ramp)

Full Detail Available Agreement Section Buyers

Contact us for Price

Posted:

10 years ago

