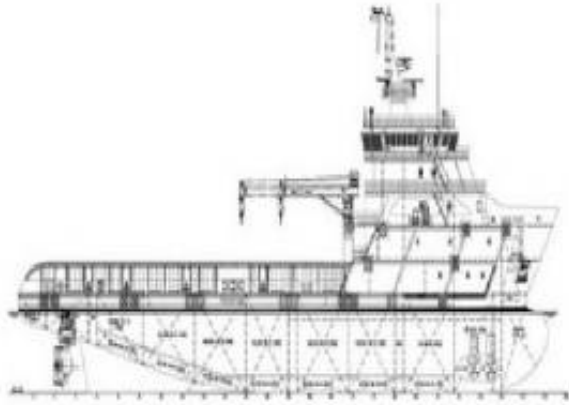


## 2 units of 75 m 6000HP FiFi 1 DP2 Platform Supply Vessels



### Broker Info

Name: Benny Ling  
First Name: Benny Ling  
Website: <http://www.megalodonmarine.com>  
Phone: +60198248000  
Address: Sublot No 18,  
Subdivision Lot 204,  
Block 1 Seduan Land  
District, Rantau  
Panjang Shipbuilding  
Industr

### Listing details

Ref No: RF666477  
Title: 2 units of 75 m 6000HP FiFi 1 DP2 Platform  
Supply Vessels  
Price: 1.00  
Model: PS7501  
Condition:  
Country:

### Additional information

Description:  
SHIP PARTICULARS

Length Overall  
75.00m

Length B.P  
66.98m

Beam moulded  
17.25m

Depth moulded  
8.00m

Draft designed  
6.50m

Deadweight:  
3000 t (approx)

Class Notation:  
ABS + A1 (E) Offshore Support, Fire Fighting Vessel Class-1 + AMS, ACCU + DPS-2, Unrestricted Services.

`condition`:  
Complete on Oct'2011

Complete on Feb'2012

GRT/NRT:  
2950 t / 885 t (approx)

Speed:  
13.0 knots (ballast `condition`)

Endurance:  
28 days (approx)

Accommodation

14 x 1-man cabin:  
14 men

18 x 2-men cabin:  
36 men

Total:  
50 men

1 x hospital  
1 man

Chiller:  
28 days

Freezer:  
28 days

Provision Store:  
28 days

#### Dynamic Position System

Kongsberg dynamic position system per ABS DPS-2 requirement for safe and efficient vessel/offshore operation.

#### Discharge Rates

Fresh Water Cargo:  
1 x 100m<sup>3</sup>/hr @ 80M head.

Fuel Oil Cargo:  
2 x 150m<sup>3</sup>/hr @ 80M head.

Drill Water:  
1 x 100m<sup>3</sup>/hr @ 80M head.

Ballast:  
80m<sup>3</sup>/hr @ 70M head.

Bilge:  
60m<sup>3</sup>/hr @ 50M head.

Liquid Mud:  
2 x 75m<sup>3</sup>/hr @ 90M head.

GS / Fi-Fi:  
1 x 80m<sup>3</sup>/hr @ 70M head.

Fuel Oil:  
2 x 20m<sup>3</sup>/hr @ 20M head.

Cement Compressor:  
2 x 20M<sup>3</sup>/min @ 80psi, air compressor.

#### Cargo Capacity

Clear Deck Area  
700M<sup>2</sup>

Fuel Oil:  
1000M<sup>3</sup>

Fresh Water:  
500M<sup>3</sup>

Deck Cargo:  
1200 t

Deck Loading:  
5.5 t/M<sup>2</sup>

Drill Water:  
1500M<sup>3</sup>

Bulk Cement:  
226M<sup>3</sup> (4 x 2000ft<sup>3</sup>)

Mud:  
600M<sup>3</sup>

Bilge holding:  
10M<sup>3</sup>

Dirty Oil:  
10M<sup>3</sup>

Lub Oil:  
10M<sup>3</sup>

Detergent:  
14M<sup>3</sup>

Supply & Drainage Plant

Sewage Holding & Treatment System:  
For 50 men

Oily Bilge Water Separator:  
1 x 1.0M<sup>3</sup>/hr with oil content less than 15 ppm.

Freshwater Hydrophore Plant::  
1 x 5M<sup>3</sup>/hr @ 35M head.

Seawater Hydrophore plant:  
1 x 5M<sup>3</sup>/hr @ 35M head.

Freshwater Maker:

2 x reverse osmosis type of 10 t/day.

Hot Water Circulation Pump:

1 for 50 men

Engines

Main Engine:

2 x 3000BHP/750RPM, Niigata 8L28HX

Shaft Alternator:

2 x 1000kW.

Propeller:

Twin fixed pitch rudder propellers.

Bow Thruster:

2 x CPP type of 10 t thrust.

Main Generator:

3 x 450kW @ 1500rpm diesel driven, Caterpillar 415V/50Hz/3ph.

Emergency Generator:

1 x 80kW, diesel driven, Caterpillar.

Deck Equipment

Windlass:

1 x electro hydraulic type of 13 t @ 18M/min for 46mm dia. Chain with 2 warping heads.

Capstan:

2 x electro hydraulic type of 10 t.@ 25M/min.

Tugger winch:

2 x electro hydraulic type of 10 t.@ 24M/min.

Anchor:

2 x 1980kgs high holding anchors.

Lashing Lug:

20 x 10 t SWL.

Deck Crane:

1 x 3 t 10M max. outreach.

## External Fire Fighting System

### External FI-FI:

Class 1 c/w fixed water spray system.

### Fire Monitor:

(Water/foam) 2 x 1200M<sup>3</sup>/hr @ 12 bar @ 120M throw length.

### Fire Pimp:

2 x 1500M<sup>3</sup>/hr @ 14 bar @ 1800rpm.

### Foam System:

20M<sup>3</sup> c/w foam monitor.

### Dispersant:

20M<sup>3</sup> with 6M spray boom on each P&S side

### Sea Chest:

2 x independent type.

## Internal Fire Fighting System

### Emergency Fire Pump:

1 x 35M<sup>3</sup>/hr @50M head (head (7 bar).

### Full Flooding CO<sup>2</sup> System:

Provided in engine room with auto alarm.

### Fire detection & alarm System:

Shipset

### B.A. recharging Compressor:

1 x electric driven 200L/min @ 200 bar (meet FiFi-1 requirement)

### Firemain:

1

### Fire hydrants:

12

### Fireman outfit:

4 complete sets.

### Portable Fire Extinguishers:

Shipset.

Fire Blanket:

2

Fire Axe:

1

Paint Locker:

Shipset

#### Life Saving Equipment

6 x 25 men life rafts.

6 sets Work vest.

1 set Oxygen resuscitator.

1 x 25 men First aid kit.

1 x 6 men Life boat c/w davit (SOLAS diesel).

50 sets Immersion suits.

7 sets EEBD.

4 sets Air breathing apparatus.

#### Navigation Equipment

1 set Magnetic compass.

1 set Echo sounder.

1 set X-band Radar 96NM.

1 set S-band Radar 96NM.

1 set Inmarsat-C.

1 set Autopilot.

1 set GPS navigator.

1 set EPIRB.

1 set Navtex receiver(GMDSS).

3 sets Portable VHF (GMDSS).

2 sets SART(GMDSS).

3 sets Gyro compass.

1 set Weather facsimile receiver.

1 set AIS.

1 set Doppler speed log.

Posted:

15 years ago

